

FOR SALE BY OWNER

9205 Prairieview Lane North
Champlin, Minnesota 55316

*Single level living
at its best!*

- 1-level 1,464 sq ft townhouse, no steps inside or out, wide doorways, move-in condition
- 2 bedrooms, 2 full bathrooms with safety features
- Conveniently located near shops, medical facilities, restaurants, parks, & other amenities
- All main living areas face south for bright interiors & scenic vista with mature oaks & pines
- Vaulted living room with gas log fireplace
- Kitchen with pantry, corner china cupboard, & informal dining
- Multi-purpose sunroom for formal dining, den, home office, or studio to suit your passions
- Central hallway for quick access to all rooms; fabulous floor plan for entertaining & daily living

An elegant, spacious, & cheerful haven

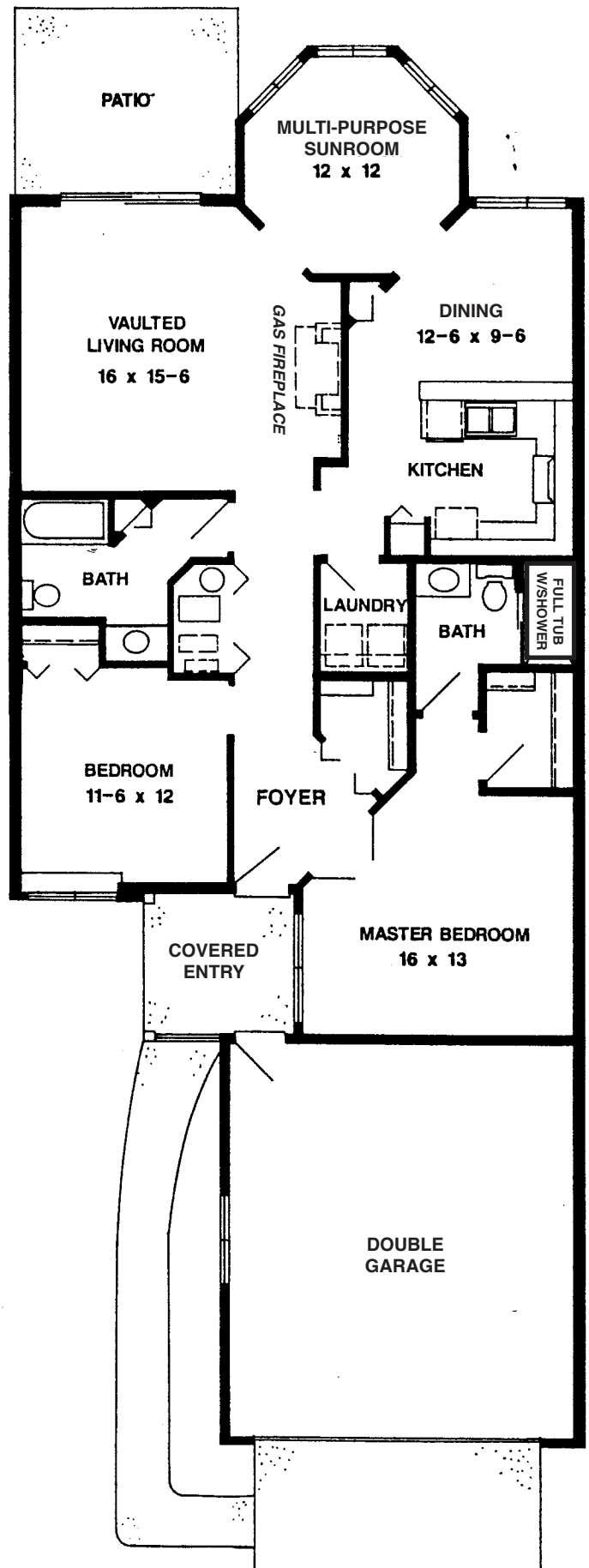
A must see at just \$183,900!

**Includes over \$30,000 in upgrades,
association fee only \$150/mo**

For more details contact
Mike Lamb (763) 422-0015
mlamb@isd.net

Photos at <http://TinyURL.com/kzq3ne2>

ALL MAIN LIVING AREAS FACE SOUTH FOR BRIGHT
INTERIORS AND VISTA OF THE SCENIC WOODED YARD.



GO TO WEBSITE: www.OneLevelTownhome.com